

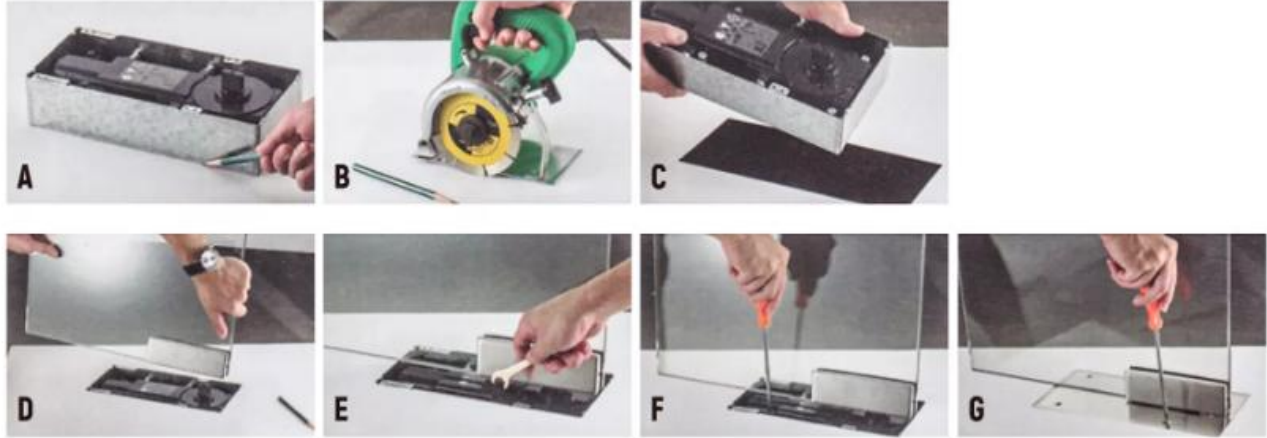
## **D50 SERIES** **Frameless Hydraulic Single Cylinder Floor Spring**



### STANDARD FEATURES

- **Certification:** Non
- **Spring Power:** Fixed EN3/Adjustable 1-4#
- **Durability:** 100,000 cycles above
- **Function:** Mechanical buffer device  
With pressure relief valve and thermostat
- **Material:** Stainless steel+Iron
- **Speed Control:** Two Section Speed Control
- **Engine Cylinder:** Single
- **Max Door With:** 800-1100mm
- **Max Door Weight:** 20-150kg
- **Max Open Degree:** 360°
- **Hold-Open:** 90°& any point at 105°~180°or NHO
- **Latching Speed Adjustment :** 0-15°
- **Closing Speed Adjustment :** 15°-90°
- **Application Temperature:** -40°-60°
- **Product Design:** Slim square box design,easy installation
- **Application:** Suitable for various wooden door,metal door&glass door
- **Finish:** Silver, Bronze, Others upon request.
- **Cover Finish:** Mirror,Stain
- **Warranty:** 5 Years
- **Dimension:** 257\*82\*50mm
- **Glass thickness:** 8-12mm
- **Advantages:** Double speed adjustment, ball bearing inside,closing smoothly

## INSTALLATION STEP:



Model #	Spring power	Recommended Door Weight	RecommendedMax. Door Leaf Width ( mm )	Notes
D50	1-4#	20-150 KGS	800-1100mm	
D50	3#	100 KGS	1000mm	

## PRODUCT DIMENSIONS:

Notes: Precise return, can be perfectly matched with electric mortise lock.

